



BUILDING NEW JERSEY'S FUTURE FOR SIX GENERATIONS**HISTORY EXPERT HOSPITAL BUILDERS**

In 1860, Isaac Blanchard, a master mason, founded the firm that is known today as Wm. Blanchard Co. in Newark, N.J. Over the next century, the Blanchard family carried on with Isaac's tradition of excellence to make Blanchard one of the regions premier general contractors. With the advent of Construction Management and increased demand for specialized expertise, Blanchard refocused its talents to become the region's leading builder of healthcare facilities.

Blanchard has long-term partnerships with Hackensack University Medical Center, Robert Wood Johnson University Hospital, Atlantic Health Systems, Meridian Hospitals Corporation, Hunterdon Medical Center, and others. Currently 95% of our projects are repeat work for clients who have selected Wm. Blanchard Co. for decades.

Today, the sixth generation of Blanchard's leading the firm can draw on the company's extraordinary heritage and passionate commitment to hard work, dedication to clients, and excellent results to ensure Blanchard's continuing position at the forefront of the industry for another 150 years.

▶ next page

HACKENSACK UNIVERSITY MEDICAL CENTER

The John Theurer Outpatient Cancer Treatment Center
Hackensack, New Jersey

The Outpatient Cancer Treatment Center is a 4-story, 165,000 square foot building dedicated to cancer treatment. The out-patient facility includes a Radiation Suite which includes 4 linear accelerators and 2 CT scan units, a dedicated Pharmacy, Laboratory, and 3 floors of outpatient services, providing many different treatments at a single location. There is also a 4-story atrium, a small café, and spacious waiting areas and lobbies. The lower levels include 80 parking spaces and a loading dock, which are well hidden from the building exterior. The building is connected to the main HUMC Campus via 2 pedestrian bridges which span over city roads.

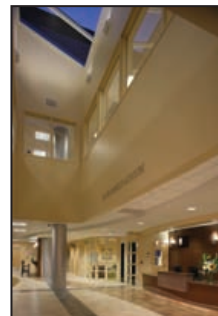


ENGLEWOOD HOSPITAL & MEDICAL CENTER

Emergency Department Addition

Englewood, New Jersey

The first floor of this 2-story addition contains a modern 40-bed Emergency Department with its own Trauma Room, complete with two Radiological and CT Diagnostic Rooms. The north end features an enclosed garage for a dedicated ambulance entrance. The second floor contains a 24-bed Medical and Surgical Unit with a 5,000 square foot Mechanical Equipment Room. The Hospital's main entrance was reconfigured to include a new Emergency Department drop-off.

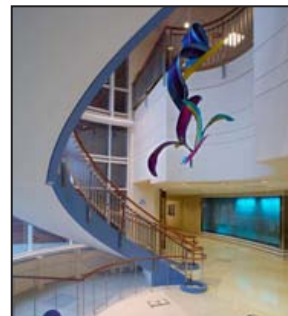


MORRISTOWN MEDICAL CENTER

Goryeb Children's Center

Morristown, New Jersey

The Goryeb Children's Center is an 86,000 square foot, 3-level addition at Morristown Memorial Hospital which consolidates fragmented services into a comprehensive pediatric center. A new entrance on the north side of the hospital, along with radiology, laboratory, a day hospital, and blood draw services make up the first level of the facility. Pediatric multi-specialty clinic/exam space, outpatient chemotherapy, a pediatric intensive care unit, and pediatric inpatient rooms occupy the upper floors.



**ROBERT WOOD JOHNSON
UNIVERSITY HOSPITAL**

THE BRISTOL-MYERS SQUIBB CHILDREN'S HOSPITAL
New Brunswick, New Jersey

The 5-story Bristol-Myers Squibb Children's Hospital consolidates all pediatric services and programs under one roof. The facility features a Pediatric Emergency Department, an expanded Child Life Center, Family Center, school room, and private rooms for parent stays. The 125,000 square foot building includes 70 pediatric beds, operating room suites, surgical same day care facilities, and resource centers complete with books, periodicals, videos and internet computer access.

The Bristol-Myers Squibb Children's Hospital also underwent a vertical expansion consisting of a 3-level addition atop the existing 5-story Children's Hospital. The vertical expansion includes a new 24-bed pediatric patient floor, an NICU and Level II Nursery floor, and a 15,000 square foot flex space top floor. The Children's Hospital remained in continuous operation while construction of the vertical expansion was underway.

[view project details online](#)

[next project](#)

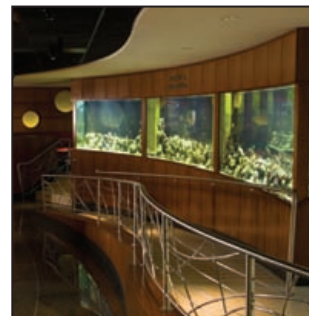
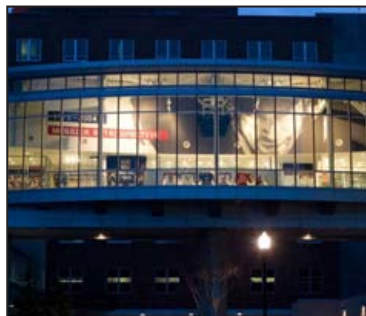


HACKENSACK UNIVERSITY MEDICAL CENTER

The Sarkis and Siran Women's and Children's Pavilion

Hackensack, New Jersey

The Sarkis and Siran Women's and Children's Pavilion, a 350,000 square foot 5-story building, is the home to The Joseph M. Sanzari Children's Hospital, The Donna A. Sanzari Women's Hospital, and The Mark Messier Skyway for Tomorrow's Children. Amenities of the pavilion include 2 magnificent atrium lobbies; 192 spacious private patient rooms; and state-of-the-art dining facilities offering custom-order room service throughout the entire pavilion, and 3 levels of parking below the structure.



**ROBERT WOOD JOHNSON
UNIVERSITY HOSPITAL**

Cancer Hospital of New Jersey
New Brunswick, New Jersey

The Cancer Hospital of New Jersey on the Robert Wood Johnson University Hospital campus contains 82 new private patient rooms, an 11-bed Bone Marrow Unit, a new MRI unit, linear accelerator suite, and cafeteria. The main entrance and lobby for the campus complex is located on the first floor of this 9-story, 201,000 square foot medical facility. A 5,000 square foot public plaza sits directly adjacent to the main entrance and the realigned intersection of Hardenberg and Little Albany Streets, with vehicular drop-off and valet parking services.



HOLY NAME MEDICAL CENTER

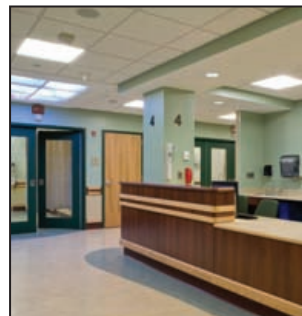
George P. Pitkin, MD Emergency Care Center Teaneck, New Jersey

The George P. Pitkin, MD Emergency Care Center is a 58,000 square foot 3-story addition to Holy Name Medical Center located in Teaneck, N.J. The building features a 20,000 square foot subdividable Conference/ Meeting Area, a 20,000 square foot 40-Bed Emergency Department and an 18,000 square foot 2nd Floor shell space which will house four new operating rooms with needed support space, and approximately 7,000 square feet of renovated areas.



[view project details online](#)

 next project

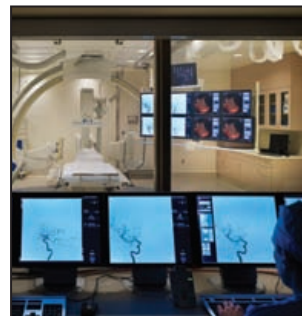


MORRISTOWN MEDICAL CENTER

Gagnon Heart Hospital

Morristown, New Jersey

The Gagnon Heart Hospital brings all cardiovascular services of the Morristown Medical Center campus under one roof. The 200,000 square foot state-of-the-art medical facility contains 148 new private patient rooms, 4 cardiac operating rooms, CCU, ICU, physician offices, a café, and two 3-story lobbies.



MORRISTOWN MEDICAL CENTER

Emergency Department Renovation

Morristown, New Jersey

The new Emergency Department Expansion at Morristown Medical Center is the second phase of an overall five phase project to completely renovate and expand the Emergency services at Morristown Medical Center. This second phase includes a renovation and expansion of the building totaling approximately 17,000 square feet and includes 15 private, state-of-the-art patient treatment rooms, 3 Trauma rooms and 1 new CT room. In addition, the project includes a large expansion and reconfiguration of the ambulance drop off area, a new drop off canopy for ambulances, new dedicated ambulance entry and improved and expanded driveway access and parking area.



MORRISTOWN MEDICAL CENTER

Carol G. Simon Cancer Center

Morristown, New Jersey

Carol G. Simon Cancer Center project includes 130,900 square feet of new construction for the Cancer Center, 2 operating rooms, and cardiac and surgical recovery areas. A 10,300 square foot renovation of adjacent space provided four additional operating rooms. 11,000 square feet of Level 2 was renovated for the Hematology and Oncology Associates of Northern N.J.



HACKENSACK UNIVERSITY MEDICAL CENTER

Ambulatory Care Facility

Hackensack, New Jersey

The Hackensack University Medical Plaza is a 9-story, 270,000 square foot ambulatory care facility with an attached parking structure and connector to the balance of the medical center. The facility houses a combination of physician practices, diagnostic services, and specialty institutes. Approximately 75% of the facility is occupied by medical center ambulatory/outpatient services, with the remaining 25% used for physician office space. The Medical Plaza Building interior centers around a large atrium which extends from the ground level through 9 levels to a rooftop skylight. The parking garage component, which is connected to an older parking structure, adds 1,000 additional parking spaces, and the overhead connector links the new facility to the other hospital buildings with access from the parking garage at the third level.

[view project details online](#)

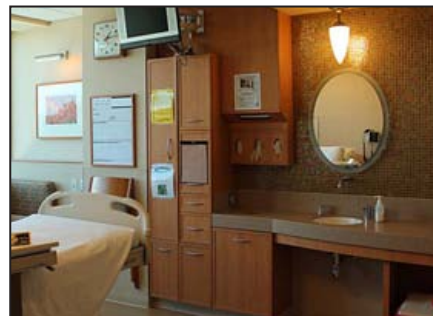
[next project](#)



MORRISTOWN MEDICAL CENTER**The Arlene & Kermit Meade Pavilion**

Morristown, New Jersey

The Arlene & Kermit Meade Pavilion is a 100,000 square foot addition over an existing one-story building. The building consists of 2 patient floors, a hospital engineering / maintenance floor and a mechanical penthouse. Cardiac and Post Partum services are expanded onto 2 floors of the building creating 64,000 square feet of new patient care space. The 40-bed cardiac unit includes 6 high acuity rooms and an isolation room. The 36-bed post partum unit includes 5 nurseries and support space. The hospital engineering department relocated to a new 20,000 square foot space which includes the administrative offices, maintenance and clinical engineering.



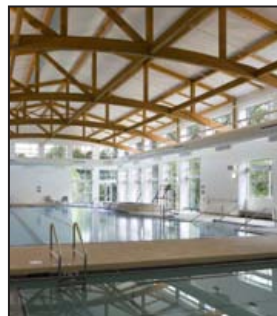
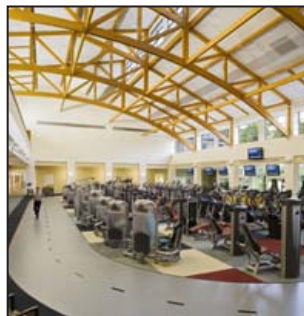
CLINTON WELLNESS CENTER

Hunterdon Medical Center

Clinton, New Jersey

This project in Clinton Township, N.J. includes the construction of a 2-story medical office building with 4 doctor offices, a G.I. Surgery Suite, and additional space for future offices.

The Wellness Center includes lap, spa and therapy pools as well as a gymnasium and several medical office suites. This project totals 91,000 square feet and was completed in early 2008.



SOMERSET MEDICAL CENTER**Hospital Expansion Project**

Somerset, New Jersey

This project includes a 44,000 square foot Emergency Department, with designated treatment areas for orthopedic injuries, psychiatric evaluations and pediatric emergency care, as well as decontamination rooms and on-site radiologic equipment. In addition, a new 44,000 square foot inpatient pavilion floor provides two 26-bed units with hotel-caliber patient rooms, each with full bathrooms. One unit is designed for oncology patients and the other for surgical patients. The project also includes a 5-level parking garage with a new rooftop helistop, and 2 additional levels atop on the existing parking deck to provide more free, on-site parking for patients and visitors.

In addition to the above, a surgical expansion was completed to provide a total of 13 surgical suites at Somerset Medical Center, along with an enlarged and renovated cardiac catheterization laboratory, an 8,500 square foot executive suite, and a boiler plant infrastructure upgrade.

[view project details online](#)

 next project



OCEAN MEDICAL CENTER

Hospital Expansion

Ocean, New Jersey

This state-of-the-art expansion includes an 80,000 square foot, 4-story addition and a 3-story parking garage with 390 parking spaces. The addition is primarily home to the Shore Rehabilitation Institute, which occupies the first two floors. The third floor is dedicated to an Intensive Care Unit for acute medical, surgical, and cardiac patients. The fourth floor contains a medical/surgical unit for 40 patient beds, and the basement is slated for a new conference area and support services.



photography courtesy of VITETTA



HOBOKEN MEDICAL CENTER

Emergency Department Addition

Hoboken, New Jersey |

The new Emergency Department Addition includes 21 Treatment Rooms, 2 Specialized Isolation Rooms, a Psychiatric Treatment Department, 2 Resuscitation Rooms, 1 OB/GYN Room, Future Radiology Room, Waiting, Vending, and Bereavement Areas, Ortho Room, Decontamination Room & Shower Area, and 2 covered entrances for ambulance and pedestrian traffic.



HACKENSACK UNIVERSITY MEDICAL CENTER

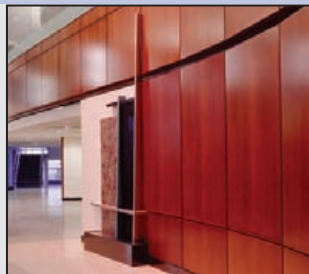
**The Don Imus-WFAN Pediatric Center
For Tomorrows Children**
Hackensack, New Jersey |

The Don Imus-WFAN Pediatric Center for Tomorrows Children consolidates all children's outpatient diagnostic and treatment programs at the medical center, including the Tomorrows Children's Institute for Cancer and Blood Disorders, the Institute for Child Development, and the center's primary and tertiary pediatric clinics. The 7-story facility features a glass-and-aluminum enclosed atrium.



BUILDING NEW JERSEY'S FUTURE FOR SIX GENERATIONS

CONTACT



PARTIAL CLIENT LIST

Bayonne Hospital

Englewood Hospital & Medical Center

Hackensack University Medical Center

Hoboken University Medical Center

Holy Name Medical Center

Hunterdon Medical Center

Jersey Shore University Medical Center

Morristown Medical Center

Mountainside Hospital

Ocean Medical Center

Overlook Hospital

Pascack Valley Hospital

Riverview Medical Center and Jersey

Robert Wood Johnson University Hospital

Saint Michael's Medical Center

Somerset Medical Center

Wm. Blanchard Co.

P.O. Box 298

199 Mountain Avenue

Springfield, NJ 07081

973.376.9100 (T)

973.376.9154 (F)

info@wmblanchard.com

www.wmblanchard.com

1860 **Blanchard**

